

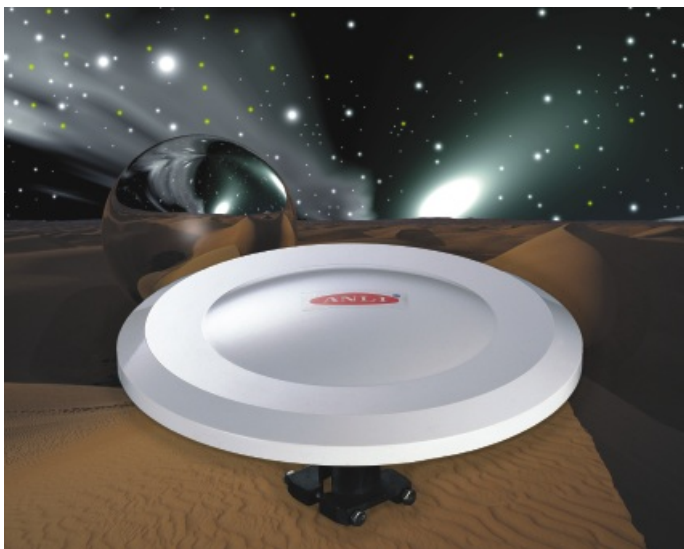
# RF COMMUNICATION

## ANTENNAS & ACCESSORIES

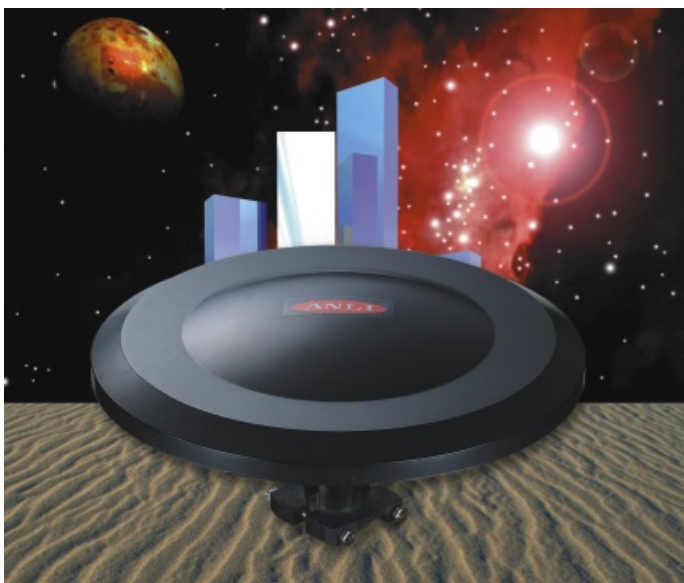
**To connect your target.....**  
**ANLI offer you the best solution!**

## PRODUCTS INDEX

ITEMS	PAGES
TV ANTENNA	1,4,5
AM-FM RADIO ANTENNA	1,2,3
VHF-UHF RF BASE ANTENNA	7,8,9,10
VHF-UHF RF VEHICLE ANTENNA	6,11,12,13,14
WIRELESS LAN ANTENNA	15,16,17,19
VHF-UHF PORTABLE RADIO ANTENNA	18
MOBILE PHONE PORTABLE ANTENNA	19
MOBILE PHONE VEHICLE ANTENNA	20,21
MOBILE PHONE BASE & MARINE ANTENNA	22
DC POWER SUPPLY	23,24
CABLE & CONNECTOR	24
RF DEVICE	24
ANTENNA MOUNT	25



UF-30W



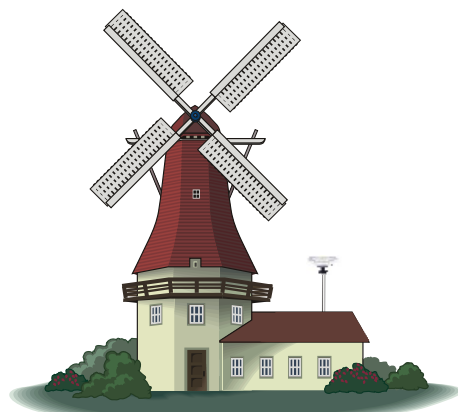
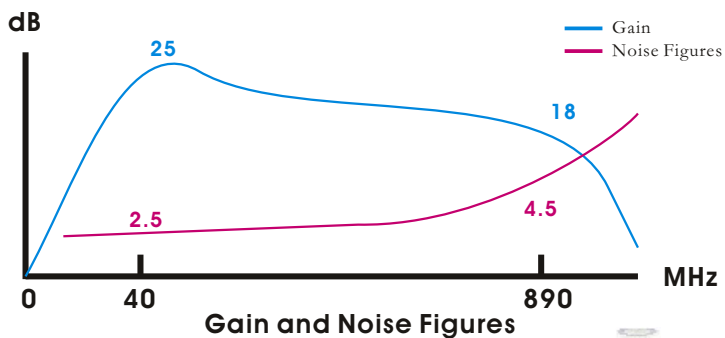
UF-30B

## OMNI-ACTIVE ANTENNA

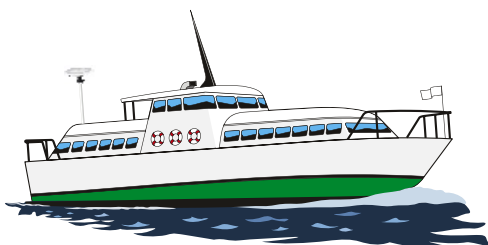
- The compact UFO style design with a high gain & ultra low noise amplifier.
- The omni-directional elements built-in. Operates on **DIGITAL** and traditional TV bands.
- High performance amplifier built on the solid state PC board with Surface Mount Technology to provide stability and reliability for TV & FM reception.
- Wide frequency range covers the full channel range of TV VHF-UHF and FM stereo.
- Removable mounting kit included, easy for flat surface or mast pipe installations.
- Operated on DC12V and AC115V dual power sources. Optional power system on DC24V or AC220.
- The optimum colour is supplied on ivory white and black. The antenna is compatible for NTSC, PAL and SECAM TV system.

SPECIFICATIONS	UF-30W	UF-30B
Frequency Ranges	40-890MHz	
Gain	18-25 dB	
Noise Figures	2.5-4.5 dB	
Output Plug	75 ohms 'F' male type	
Power Source	DC12V-AC115V or DC12V-AC220V DC24V-AC115V or DC24V-AC220V	
Weight	1.20KGS	
Dimensions	30 cm x 30 cm x 15 cm	
Option	special plug available	

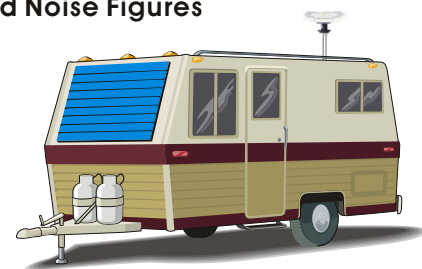
### APPLICATION



HOME



MARINE



RV



## INVISIBLE & REVOLUTIONARY! DIGITAL MICRO SCREEN AM-FM ANTENNA

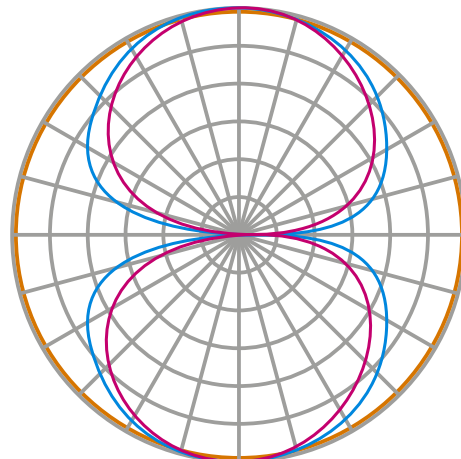
- The MSA-1 is a new proprietary design that enhances performance with its unique MICRO SCREEN element. AM-FM radio reception is not affected when vehicles or marines travelling in relationship to the radio broadcasting station.
- Easy to install it on the inside of a car or boat with 3M VHB adhesive tape. No mounting holes required. No car or boat wash vandalism problem. 100 % weather proof. Operates on **DIGITAL** and traditional AM-FM radio reception.
- The enhanced performance is close to traditional outside vertical antennas and is extremely omni-directional.
- The MSA-1 can be mounted on non-metallic surfaces and glass, even out of sight on the car or boat body of fiberglass. It fits any land or marine vehicles.

### H or V INSTALLATION



**E-PLANE** — Traditional vertical whip  
— MSA-1

**H-PLANE** — MSA-1



Radiation pattern comparing chart

#### MSA-1

PAT. US 454862  
TW 49034

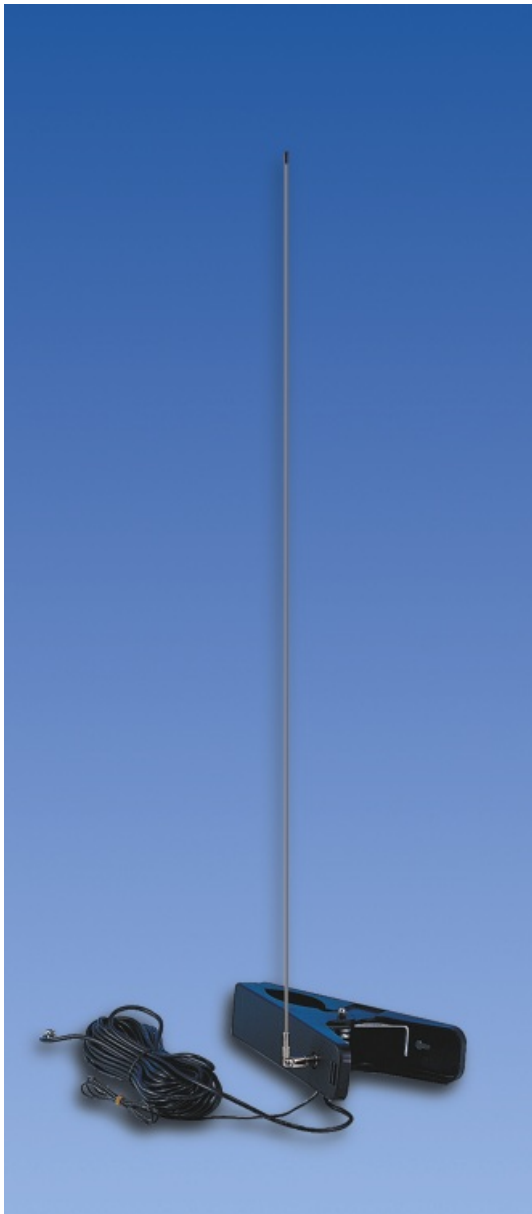
SPECIFICATIONS	MSA-1
Radio Band	AM band & 76-90 or 88-108 MHz
Gain	Unity
Element Length	610mm (24 in)
Output Plug	Standard car radio type
Cable	Low loss 5Y-3P 1.9M (6.3ft)
Weight	0.1KGS
Dimensions	61 cm x 1 cm
Option	special plug available



FM-3Y

## OUTDOOR FM ANTENNA

- The FM-3Y was designed for FM radio reception at the district of weak signal strength. High gain and performance to keep FM radio in stereo and HI-FI reception.
- Directional YAGI type, operates on **DIGITAL** and traditional FM band.
- The elements are constructed of aluminum alloy tube and heavy duty element clip with high quality 'powder coating' to offer high stability and reliability for FM reception at the weak signal district.
- Heavy duty mounting kit included, easy for installation on the roof of a house.



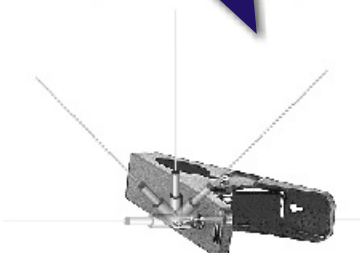
AF-11C

SPECIFICATIONS	FM-3Y	AF-11C
FM BAND	76-90 MHz or 88-108 MHz	AM band and 76-90 or 88-108 MHz
Gain	> 3.0 dB	Unity
Element Length	Half wave	800 mm
Output Plug	75 ohms 'F' female	75 ohms 'F' male
Cable	Optional	2.5C-2V 15Meter
Weight	1.4KGS	0.62KGS
Dimensions	150 cm x 120 cm	80 cm x 23 cm
Option	Special cable or plug available	

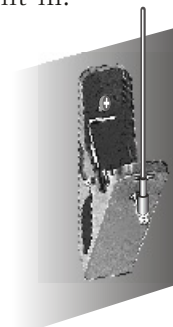
## AM-FM CLIP ANTENNA

- The AF-11C is a proprietary design for AM-FM radio reception. Easy to remove or install it on the inside or outside of houses or marines. The high performance and low loss design will keep FM radio in stereo and HI-FI reception.
- Omni-directional antenna, operates on **DIGITAL** and traditional AM-FM band. Multi-install functions for 30-90mm pipe clipping or hanging on the wall with H/V 360 degree whip rotation.
- The AF-11C is constructed with a stainless steel whip and heavy duty clip to offer high stability and reliability for AM-FM reception. 1M wire of dipole element built-in.

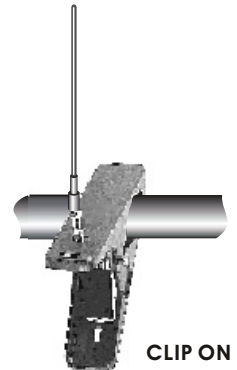
### APPLICATION



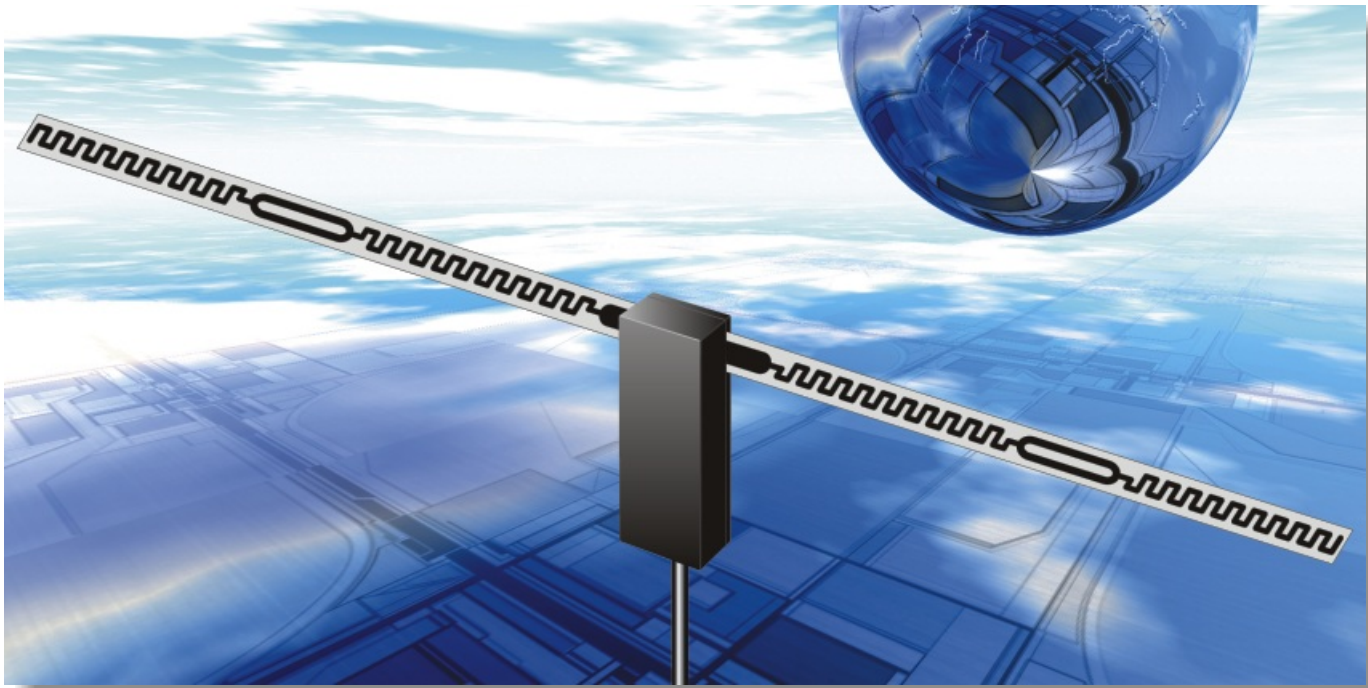
WHIP SWIVEL



HANG UP



CLIP ON



MSA-2

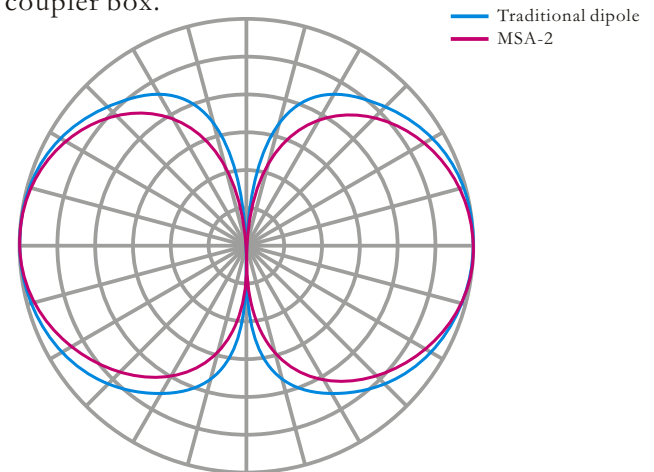
PAT. US 454862  
TW 49034

## INVISIBLE & REVOLUTIONARY!

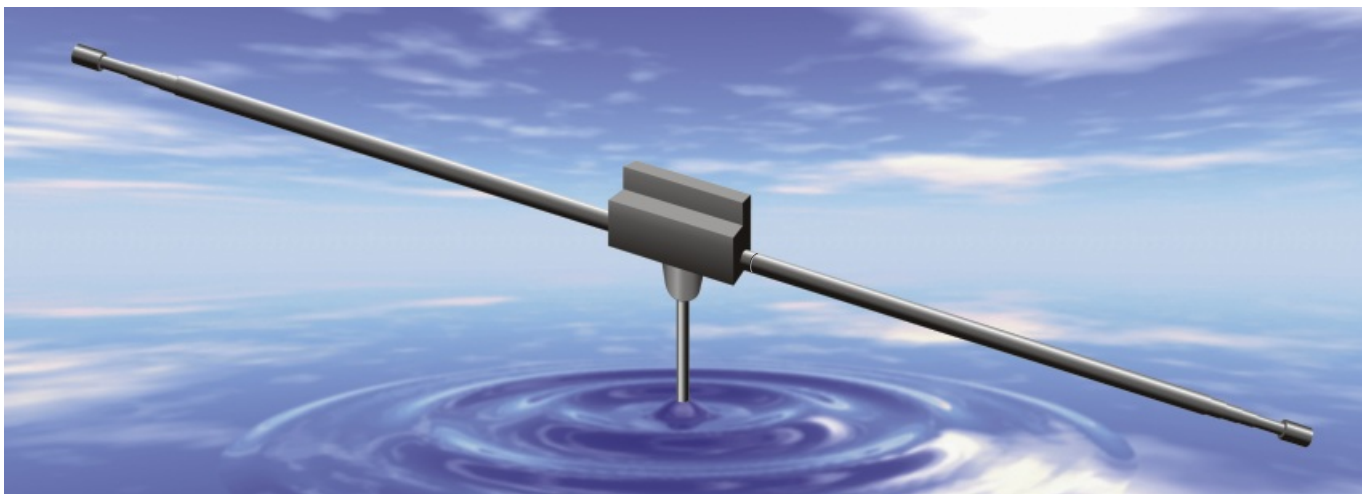
### DIGITAL MICRO SCREEN TV ANTENNA

- The MSA-2 is a new proprietary design that enhances performance with its unique MICRO SCREEN element TV reception is not affected when vehicles or marines are travelling in relationship to the TV broadcasting station. Compatible for NTSC, PAL and SECAM world wide TV system.
- Easy to install on the inside of a car or boat with 3M VHB adhesive tape. No mounting holes required. No car or boat vandalism problem. 100 % weather proof. Operates on **DIGITAL** and traditional TV reception.
- The enhanced performance is close to traditional antennas and is extremely omni-directional.
- The MSA-2 can be mounted on non-metallic surfaces and glass, even out of sight on the car or boat body of fiberglass. It fits any land or marine vehicles.
- The angle off the antenna elements can be adjusted from the coupler box.

SPECIFICATIONS	MSA-2
TV CHANNEL	VHF-UHF full channels
Gain	>2.5 dBi
Element Length	610mm (24 in) x 2
Output Plug	75 ohms 'F' male type
Cable	2.5C-2V 75 ohms 15FT
Weight	0.1KGS
Dimensions	123 cm x 1 cm
Option	special plug available



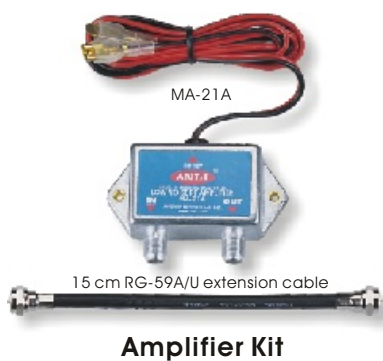
H-PLANE  
Radiation pattern comparing chart



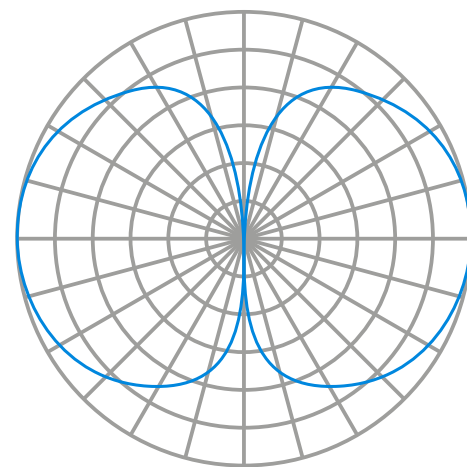
MA-21

## RETRACTABLE DIPOLE TV ANTENNA

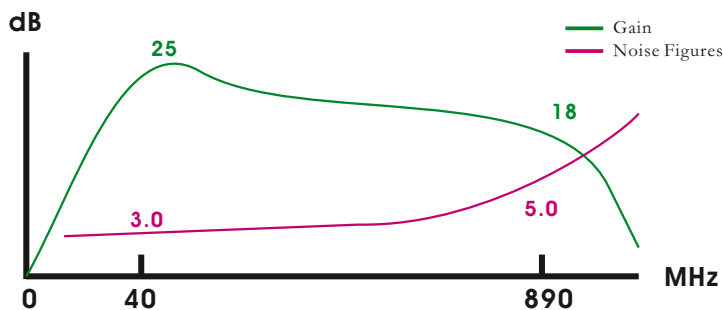
- The MA-21 is a dipole design that enhances performance with its retractable telescope elements and MA-21A low loss amplifier. Compatible for NTSC, PAL and SECAM world wide TV system.
- Easy to install it inside of the car or boat. No mounting holes required. No car or boat vandalism problem. and 100 % weather proof. Operates on **DIGITAL** and traditional TV reception.
- The MA-21 can be mounted on non-metallic surfaces and glass, even out of sight on the car or boat body of fiberglass. 3M VHB adhesive tape allows for the antenna to be mounted virtually anywhere on land or marine vehicles.



### APPLICATION



**H-PLANE**  
Radiation pattern chart



**Gain and Noise Figure**

SPECIFICATIONS	MA-21+MA-21A
Frequency range	40-890 MHz
Gain	18-25 dB
Noise Figures	3-5 dB
Output Plug	75 ohms 'F' male type
Cable	2.5C-2V 75 ohms 15FT
Power Source	DC12V or DC24V
Weight	0.22 KGS
Dimensions	142 cm x 3 cm
Option	special plug available



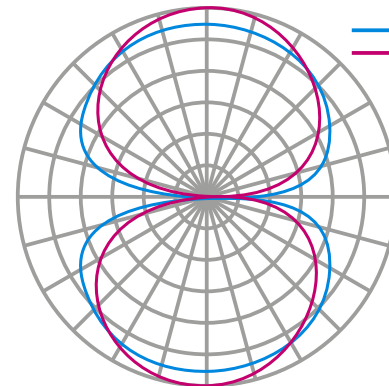
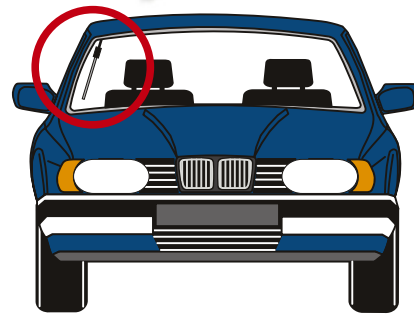
MSA-3

PAT. US 454862  
TW 49034

## INVISIBLE & REVOLUTIONARY! DIGITAL MICRO SCREEN VHF-UHF ANTENNA

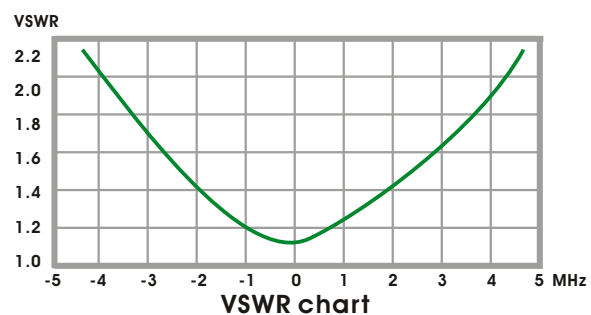
- The MSA-3 is a new proprietary design that enhances performance with its unique MICRO SCREEN element. Easy to install it on the inside of a car or boat with 3M VHB adhesive tape. No mounting holes required. No car or boat vandalism problem. 100 % weather proof. Operates on VHF or UHF bands. Standard 50 ohms output impedance.
- The enhanced performance is close to traditional outside vertical antennas and is extremely omni-directional.
- The MSA-3 can be mounted on non-metallic surfaces and glass, even out of sight on the car or boat body of fiber-glass. It fits any land or marine vehicles.

### APPLICATION



— Traditional vertical antenna  
— MSA-3

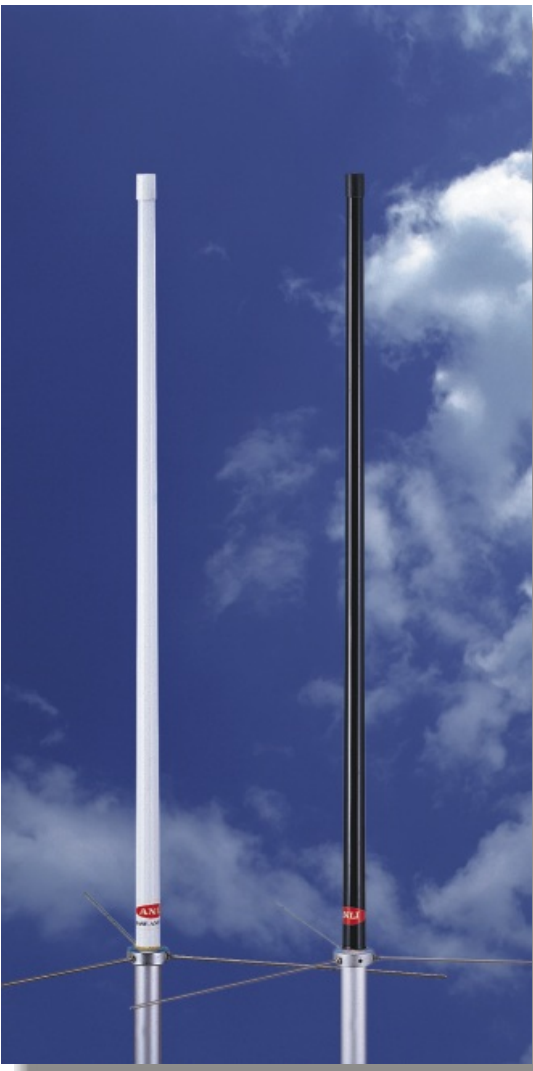
E-PLANE  
Radiation pattern comparing chart



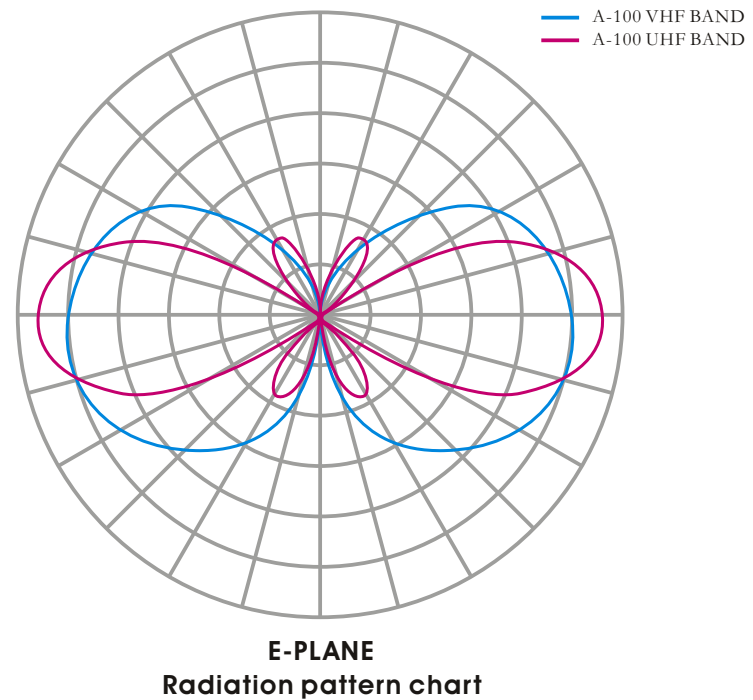
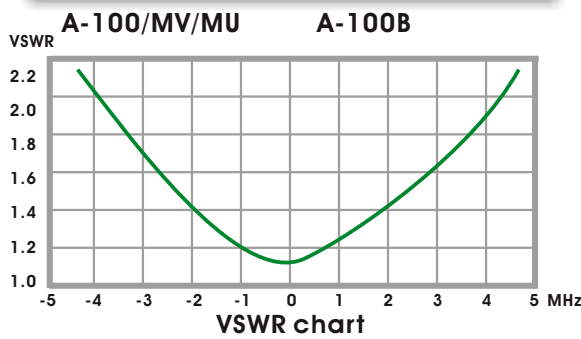
SPECIFICATIONS	MSA-3
Frequency Range	150-174 or 405-475 MHz
Gain	3/5 dBi
Max. Power Load	60W max.
VSWR	Less than 1.5:1
Output Connector	UHF male (PL-259)
Cable Length	15 ft RG-58 A/U
Weight	0.15 KGS
Dimensions	50 cm x 1 cm



## FIBERGLASS GP ANTENNA



- The A-100 series are designed for VHF-UHF band RF radio communication with Ground-Plane elements. The outer shell is constructed of high density fiberglass tube to offer higher stability and reliability on the wireless communication. 100 % weather proof. The working temperature from +80 degree C to -40 degree C.
- Highly conductive copper coils are combined to be collinear arrays to generate more antenna gain and best impedance matching at low VSWR.
- The A-100 series offers 4 models for RF radio communication, A-100/A-100B operates on 2M/70CM amateur radio band. The A-100MV operates on VHF band while the A-100MU operates on UHF band.
- Standard 50 ohms for output impedance with UHF female connector, The standard **N female** connector is available by custom order. The color of A-100/MV/MU is white while the A-100B is black.



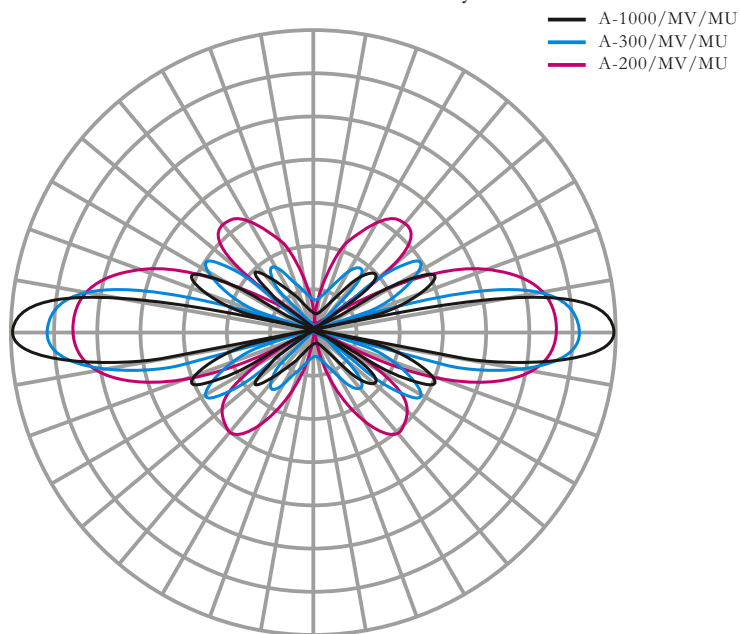
SPECIFICATIONS	A-100/A-100B	A-100MV	A-100MU
Frequency Range	143-148/430-460 MHz	150-174 MHz	405-512 MHz
Gain	3.5/6 dBi	3 dBi	5 dBi
Max. Power Load	150W cw(300W max.)	150W cw(300W max.)	150W cw(300W max.)
VSWR	Less than 1.5:1	Less than 1.5:1	Less than 1.5:1
Output Connector	UHF female (SO239)	UHF female (SO239)	UHF female (SO239)
Weight	1.1KGS	1.1KGS	1.1KGS
Dimensions	115 cm(45in)	115 cm(45in)	115 cm(45in)
Wind Load	125 Mph	125 Mph	125 Mph

## FIBERGLASS GP ANTENNA

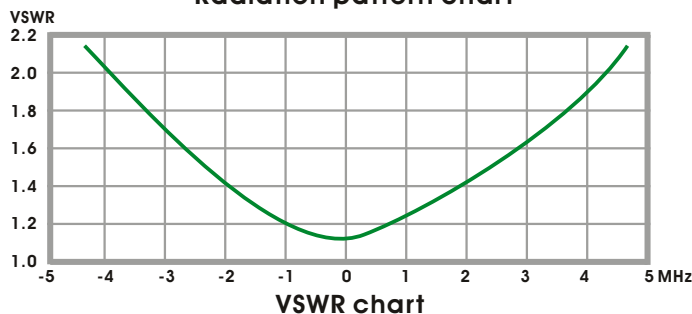
- The A series are designed for VHF-UHF band RF communication with Ground-Plane elements. The outer shell is constructed of high density fiberglass tube to offer higher stability and reliability on the wireless communication. 100 % weather proof. The working temperature from +80 degree C to -40 degree C.
- Highly conductive copper coils are combined to be collinear arrays to generate more antenna gain and best impedance matching at low VSWR.
- Standard 50 ohms for output impedance with UHF female connector. The standard **N female** connector is available by custom order.



A-1000/MV/MU    A-300/MV/MU    A-200/MV/MU



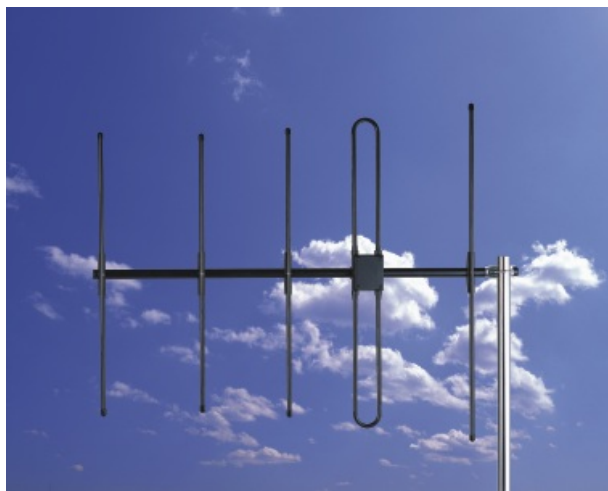
**E-PLANE**  
Radiation pattern chart



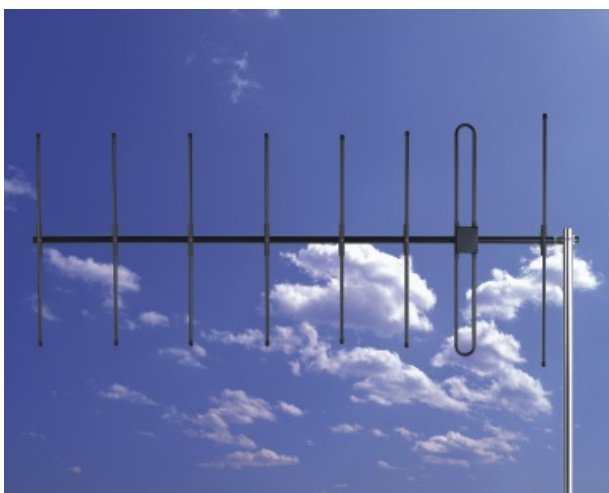
SPECIFICATIONS	A-200/300/1000	A-200/300/1000MV	A-200/300/1000MU
Frequency Range	143-148/430-460 MHz	150-174 MHz	405-512 MHz
Gain	4.5/7.8 , 6.5/10 , 8.5/11.8 dBi	5 , 7 , 9 dBi	8 , 10 , 12 dBi
Max. Power Load	150W cw(300W max.)	150W cw(300W max.)	150W cw(300W max.)
VSWR	Less than 1.5:1	Less than 1.5:1	Less than 1.5:1
Output Connector	UHF female(SO239)	UHF female(SO239)	UHF female(SO239)
Weight	1.3 , 2.2 , 2.6KGS	1.3 , 2.2 , 2.6KGS	1.3 , 2.2 , 2.6KGS
Dimensions	180 , 360 , 520 cm	180 , 360 , 520 cm	180 , 360 , 520 cm
Wind Load	125 Mph	125 Mph	125 Mph



YG-3V



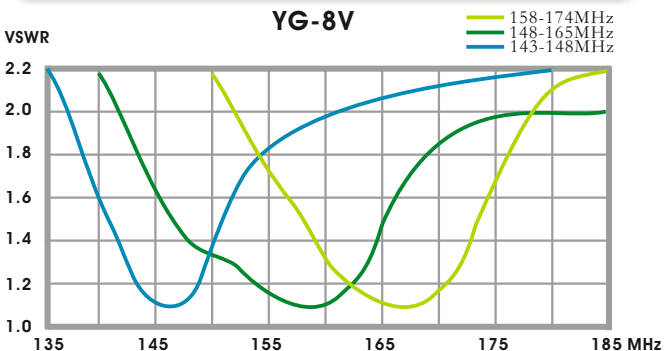
YG-5V



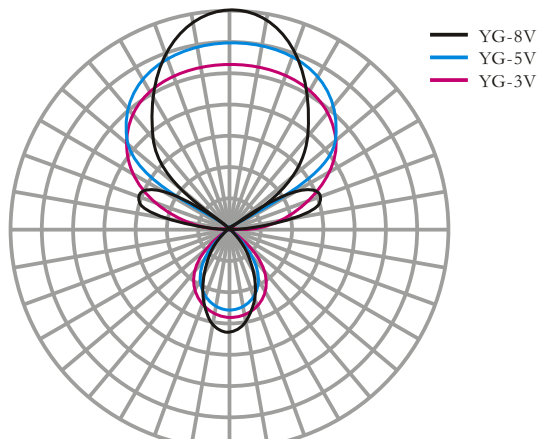
YG-8V

## DIRECTIONAL ANTENNA

- The YG series are directional YAGI types. The elements are constructed of aluminum alloy tube and heavy duty element clips with high quality 'powder coating' to provide high stability and reliability for long range RF radio communications. The standard **N female** connector is available by custom order.
- Heavy duty mounting kit included, easy for installation. The dipole feeding box is weather and water proof.

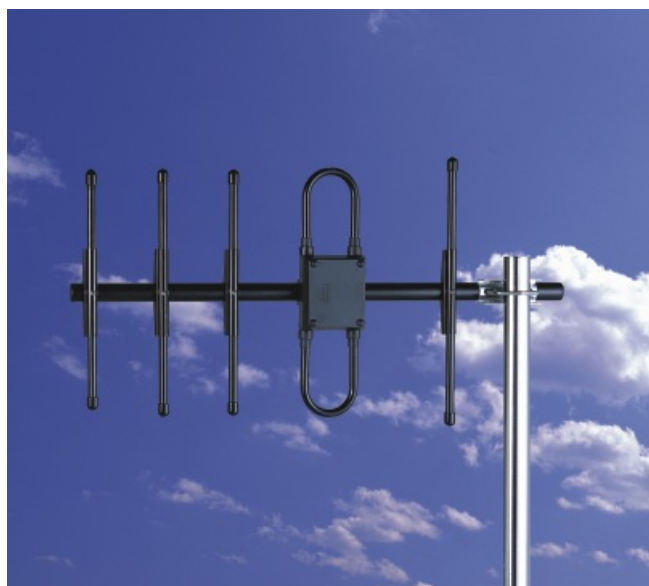


VSWR chart

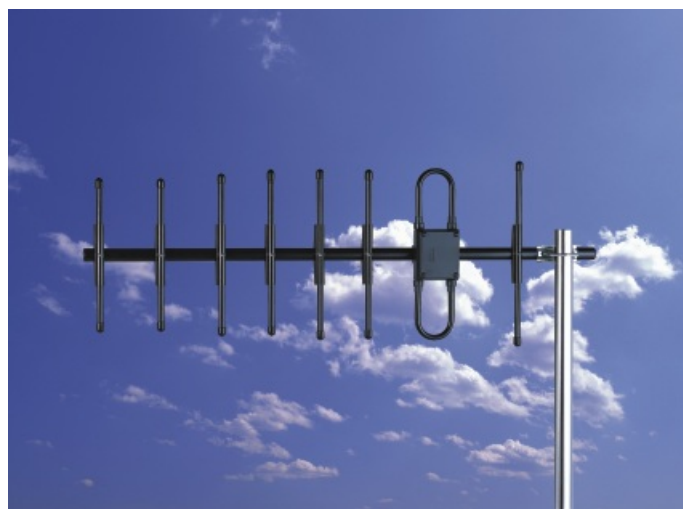


E-PLANE Radiation pattern chart

SPECIFICATIONS	YG-3V	YG-5V	YG-8V
Frequency Range	148-165/158-174 MHz	143-148/148-165/158-174 MHz	148-165/158-174 MHz
Gain	>7dbi	>11dbi	>14dBi
Max. Power Load	200W cw(300W max.)		
VSWR	Less than 1.5:1		
Output Connector	UHF female (SO-239)		
EP -3 dB Beam Width	68°	55°	37°
Weight	1.1KGS	1.5KGS	2.1KGS
Wind Load	125 Mph		



YG-5U



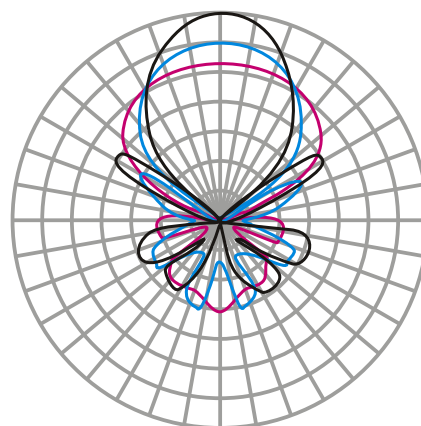
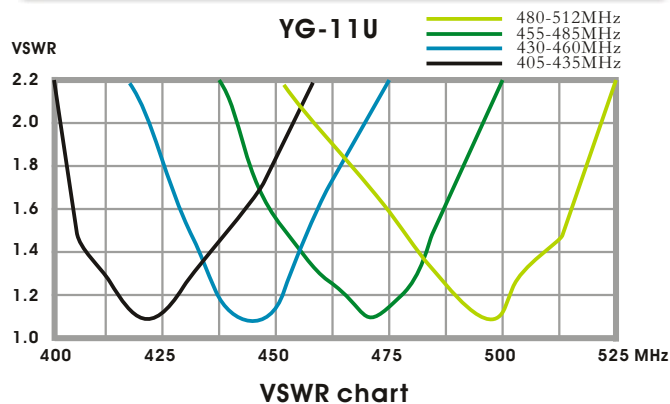
YG-8U

## DIRECTIONAL ANTENNA

- The YG series are directional YAGI types. The elements are constructed of aluminum alloy tubes and heavy duty element clips with high quality 'powder coating' to provide high stability and reliability for long range RF radio communications. The standard **UHF female** (SO-239) connector is available by custom order.
- Heavy duty mounting kit included, easy for installation. The dipole feeding box is weather and water proof.



YG-11U



— YG-11U  
— YG-8U  
— YG-5U

**E-PLANE**  
Radiation pattern chart

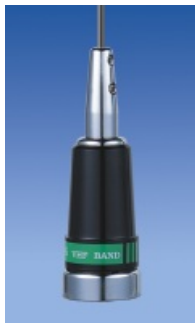
SPECIFICATIONS	YG-5U	YG-8U	YG-11U
Frequency Range	405-435/430-460/455-485/480-512 MHz		
Gain	>10dbi	>13dbi	>16dBi
Max. Power Load	200W cw(300W max.)		
VSWR	Less than 1.5:1		
Output Connector	N female		
EP -3dB Beam Width	55°	42°	36°
Weight	1.0KGS	1.4KGS	1.9KGS
Wind Load	125 Mph		

## HIGH PERFORMANCE VHF-UHF ANTENNA

- There are some wireless communication needs for a narrow band antenna. The AW-6 is designed for this application . It operates on VHF or UHF single band. The working frequency rang was selected by cutting the whip. The whip cutting table is included. Output connector built in standard UHF male(PL-259).
- The SQ-7 is constructed of a metal housing with heavy duty UHF male output connector. This antenna provides high stability and reliability for RF radio communication on vehicles. The white antenna body come with a high gloss 'powder coating', 100 % weather and water proof. The working frequency covers on VHF or UHF single band. The operation frequency range can be selected by cutting whip. The whip cutting table is included with antenna package.
- Sometimes a broadband antenna is required for multi-band wireless communications. The AT-2 provides a wide frequency range on VHF and UHF dual band. It operates on VHF from 139MHz to 150MHz and UHF from 360MHz to 460MHz. The good vehicle grounding can get low VSWR. The model AT-2UHF has a built in UHF male connector, AT-2NMO has a built in NMO connector.
- The AT-3/AT-3C operates on VHF/UHF dual band. The quarter wave whip is constructed with a shock-proof spring on the antenna body, easy for installation and maintenance. The vehicle ground plane is required. The AT-3C has a built in phase coil on the whip.



AT-2UHF  
AT-2NMO



**APPLICATION**



AT-3C



AT-3



SQ-7



AW-6

SPECIFICATIONS	AW-6	SQ-7	AT-2UHF AT-2NMO	AT-3	AT-3C
Frequency Range	138-174 MHz		139-150 MHz 360-460 MHz	143-148/430-460MHz	
Gain	3.2 dBi		Unity/3.5 dBi	Unity	
Max. Power Load	100W max.			150W max.	
VSWR	Less than 1.5:1			Less than 1.8:1	
Output Connector	UHF male(PL-259), NMO male available on AT-2NMO				
Wave Length	5/8		1/4+1/2	1/4	
Weight	150 g	210 g	185 g	90 g	95 g
Dimensions	133 cm	95-135 cm	58 cm	52 cm	48 cm

## HIGH PERFORMANCE CB , 6M & VHF-UHF ANTENNA

- The X series antenna are designed for CB and 6 meter wave wireless communications. The X-60CM works on 50 MHz band. The X-27CB operates on 27 MHz CB band. The high reliability construction of antenna body provides more stable TX/RX signal when vehicles are travelling in relationship to the mobile or base station. Output connector is built in a standard UHF male (PL-259) type.
- The X-270H/C operates on **amateur radio** 2M and 70CM band. The X-270H is constructed with a close phase coil whip, it's whistle free during the vehicles in travelling. The whip of X-270C has a built in open phase coil. A standard UHF male connector is on the output port.
- Sometimes a removable antenna is required for **amateur radio** communication. The MG-270 was designed for removable application on the vehicles. The antenna body is constructed of a high flux **Nd-Fe-B** alloy magnet with black ABS housing. 9ft of RG-174AU coaxial cable come with a standard BNC male connector.
- The AT-5R and WH-14M operates on VHF/UHF band of amateur and commercial radio. The high flux magnet is constructed of a black ABS housing with a stainless steel whip for WH-14M. 15ft RG-58AU **gas-injection** low loss coaxial cable and PL-259 connector is included.

The AT-5R is designed for top roof installation on vehicles. Standard 3/4" NMO connector is built in. The whip is constructed of stainless steel wire with black chrome plating. 15ft RG-58AU **gas-injection** low loss coaxial cable and PL-259 connector is also included.



X-270C

X-270H

X-60CM  
X-27CB

MG-270

AT-5R

WH-14M

SPECIFICATIONS	X-60CM	X-27CB	X-270H/C MG-270	AT-5R	WH-14M
Frequency Range	47-55 MHz	26-28 MHz	143-148 MHz 430-460 MHz	130-174/405-512MHz	
Gain	Unity	Unity	3/5 dBi Unity	Unity/3.5 dBi	
Max. Power Load	100W max.			150W max.	
VSWR	Less than 1.5:1				
Output Connector	UHF male(PL-259)		UHF male(PL-259) BNC	UHF male(PL-259) plus 15ft RG-58AU low loss cable	
Wave Length	1/4	1/8	1/4+1/2 1/4	1/4	
Weight	170 g	170 g	185/50 g	230 g	400 g
Dimensions	135 cm	135 cm	98/50 cm	46 cm	47 cm

## ELEVATED FEED CB , 6M & VHF-UHF ANTENNA

- The EX series antennas were designed for CB , 6 meter wave and VHF-UHF wireless communication. The EX-6H works on the 50 MHz band. The EX-6CB operates on the 27 MHz CB band. The elevated feed construction of the antenna body provides more stable TX/RX signal when vehicles are travelling in relationship to the mobile or base station. The output connector is built in a standard NMO male type.
- The EX-2HV/270H are EX series design. They operate on **amateur radio** 2M and 70CM band. The EX-2HV has an open phase coil whip with a shock proof spring to insure against breakage when the mast is hit. The whip of EX-270H has an open phase coil with black chrome plated. The output port comes with a standard NMO male connector.
- Sometimes a short antenna is required for commercial radio communication. The EX-2V and QW-70U has a quarter wave whip for such application. The operation frequency range can be selected by cutting whip. The whip cutting table is included with antenna package. The antenna body is constructed of a heavy duty black ABS housing with shock-proof spring.



EX-70U



The shock-proof design to insure against breakage when vehicles pass branches of forest or parking in a low level garage.



EX-2HV

EX-270HD



EX-6H/CB EX-2V

SPECIFICATIONS	EX-2HV	EX-270HD	EX-6H EX-6CB	EX-2V	QW-70U
Frequency Range	143-148 MHz	143-148 MHz 430-460 MHz	47-55 MHz 26-28 MHz	130-174 MHz	405-512 MHz
Gain	3 dBi	3/5 dBi	Unity	Unity	
Max. Power Load	100W max.				
VSWR	Less than 1.5:1				
Output Connector	NMO 3/4"				
Wave Length	0.5	0.5+5/8x2	1/4 1/8	1/4	
Weight	245 g	245 g	265 g	250 g	230 g
Dimensions	100 cm	100 cm	137 cm	118 cm	48 cm

## THE OPTIMUM DESIGN AMATEUR RADIO ANTENNA

- The WH series antennas are designed for **amateur radio** communications. The antenna operates on VHF-UHF amateur radio band. High reliability construction of the antenna body provides best stability of TX/RX signal when vehicles are travelling in relationship to the mobile or base station. A standard UHF male (PL-259) type connector is built in.
- The antennas are engineered with a pull-out and fold-down design to insure against breakage. This unique function will not require you to remove the antenna when parking in a low level garage. They feature natural chrome plating and a low profile mounting base for superior reliability and performance.

WHIP PULL-OUT &  
FOLD DOWN DESIGN



WH-718 WH-719 WH-711C WH-713 WH-711 WH-716 WH-717

SPECIFICATIONS	WH-711 WH-711C	WH-713	WH-714	WH-716 WH-717	WH-718	WH-719
Frequency Range	143-148/430-460 MHz					
Gain	3/5dBi		5/7.8dBi	2.15/3dBi	3/5dBi	
Max. Power Load	100W max.					
VSWR	Less than 1.5:1					
Output Connector	UHF male(PL-259)					
Wave Length	0.5+5/8x2		0.5+5/8x3	1/4+3/4	0.5+5/8x2	
Weight	260/240 g	300 g	340 g	245/255 g	290 g	275g
Dimensions	90/98 cm	96 cm	157 cm	57/58 cm	110 cm	88 cm

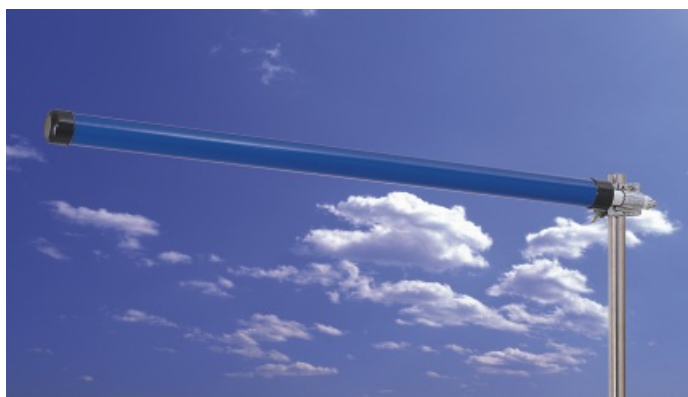
WH-714



## ULTRA HIGH GAIN DIRECTIONAL ANTENNA

● The YG-25 series are ultra high gain directional YAGI types. The elements are constructed of aluminum alloy and heavy duty outer pipe with a weather proof design to provide high stability and reliability for long range RF radio communications. The standard **N female** connector is built in. It operates on wireless LAN, video sending, amateur radio and data transmission system.

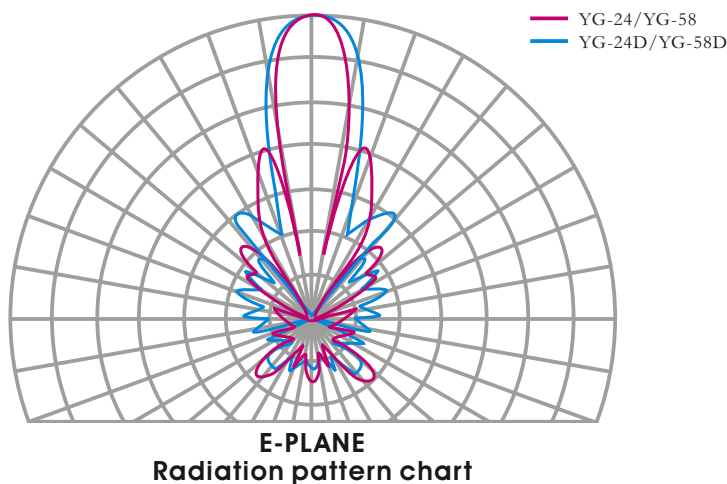
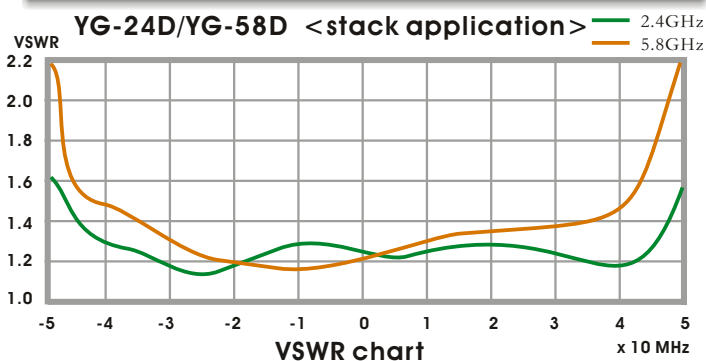
● The heavy duty mounting kit is included for easy installation. The antenna can be adjust to transmitting and receiving degree at  $\pm 15$  degree. 'Y' type power divider included for YG-24D/YG-58D stack application.



YG-24/YG-58



**ANGLE ADJUSTABLE**



SPECIFICATIONS	YG-24/YG-58	YG-24D/YG-58D
Frequency Range	2400-2500 MHz / 5100-5800 MHz	
Gain	> 20 dBi	> 23dBi
Max. Power Load	100 W max.	200 W max.
VSWR	Less than 1.5:1	
Output Connector	Standard 50 ohms N female type	
EP -3dB Beam Width	23°	35°
Weight	1.2 / 0.7 KGS	2.9 / 1.8 KGS
Dimensions	135 cm / 65 cm	135 cm x 2 / 65 cm x 2



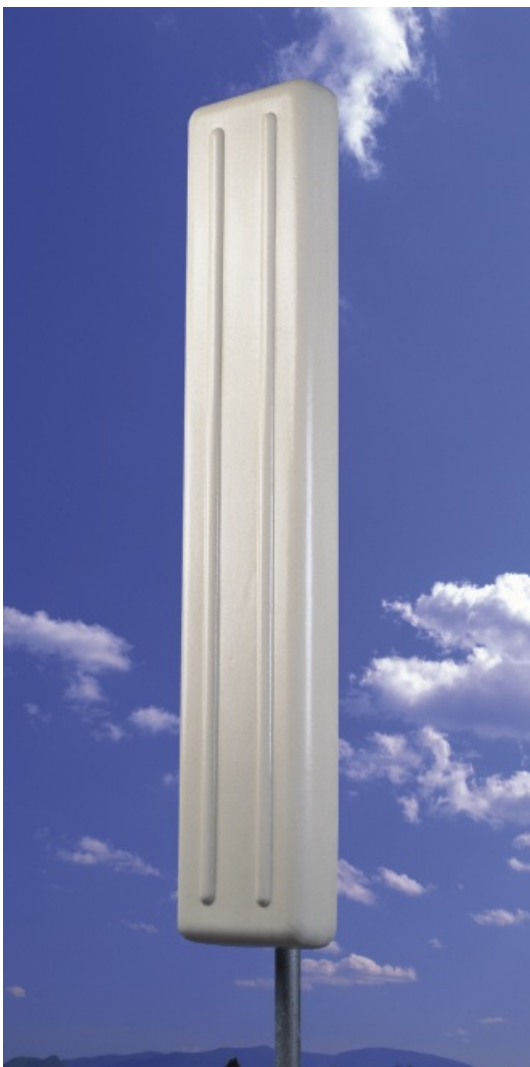
DS-24 / DS-58



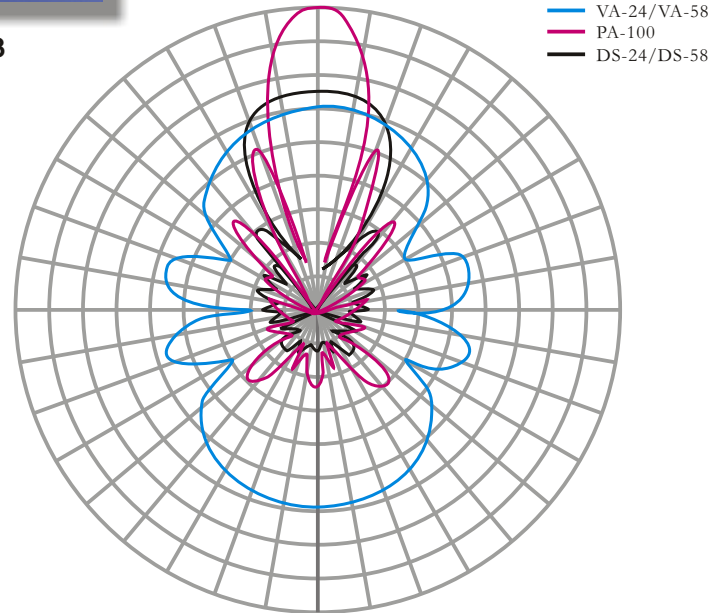
VA-24 / VA-58

## HIGH PERFORMANCE PATCH ANTENNA

- The PA-100 is an ultra high gain directional patch types. The elements are constructed of linear micro strip arrays and heavy duty housing with a weather proof design to provide high stability and reliability for long range application. The standard **N female** connector is built in. It operates on wireless LAN, video sending, amateur radio, data transmission and other RF communication systems. The VA-24 /VA-58 are omni-directional. They are ideal for short and wide range application.
- The heavy duty mounting kit is included for easy installation. The DS-24/DS-58 can be adjusted on TX/RX at +/-15 degree direction.



PA-100



**E-PLANE**  
Radiation pattern chart

SPECIFICATIONS	DS-24 DS-58	VA-24 VA-58	PA-100
Frequency range	2.4-2.5 or 5.1-5.8 GHz		1.7-1.8 or 1.8-1.9 GHz 2.4-2.5 or 5.1-5.8 GHz
Gain	6/8 dBi	4/6 dBi	11/13 dBi
Max. Power Load	100 W max.		
VSWR	Less than 1.5:1		
Output Connector	Standard N female type		
EP -3dB Beam Width	28°	45°	19°
Wind Load	125 MpH		
Weight	0.6 KGS	0.27 KGS	6.5 KGS
Dimensions	15 cm x 24 cm	25 cm x 6 cm	30 cm x 110cm

## INDOOR PATCH ANTENNA



RP-240 / RP-580

- The RP series are high gain directional patch type antennas. The elements are constructed of linear micro-strip on a low loss Teflon PC board with a round housing design to provide high stability and reliability for indoor communications application. A standard 50 ohms **N female** connector is built in. It operates on wireless LAN, video sending, amateur radio and data transmission systems. The SV-240 and SV-580 are small vertical omni-directional antennas. They are ideal for small room installation.
- The heavy duty mounting kit is included for easy installation on the ceiling or to hang on the wall..



Wall mount



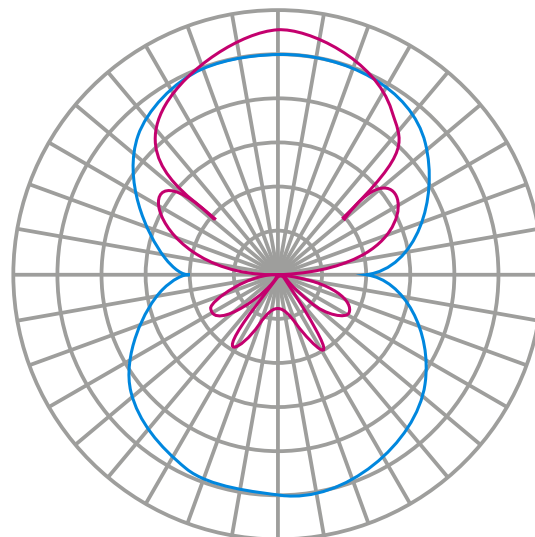
ceiling mount



Wall mount



SV-240 / SV-580



— SV-240/SV-580  
— RP-240/RP-580

E-PLANE  
Radiation pattern chart

SPECIFICATIONS	RP-240 / RP-580	SV-240 / SV-580
Frequency Range	2400-2500 MHz / 5100-5800 MHz	
Gain	7 dBi / 9 dBi	Unity / 3dBi
Max. Power Load	100W max.	
VSWR	Less than 1.5:1	
Output Connector	Standard 50 ohms N female type	
EP -3dB Beam Width	55°	75°
Weight	1.1 KGS	120 g
Dimensions	30 cm x 30 cm	11 cm x 2 cm

2 in 1  
elements

## RETRACTABLE & FLEXIBLE HAND-HELD ANTENNA

- The AL-800 and AL-800W are retractable antennas with 2 in 1 design. The long telescope and short flexible whips are exchangeable from each antenna body. The antennas operates on VHF and UHF bands.
- The AL-760 designed for VHF band only. The AL-750 has a 360 degree swivel whip with a retractable mast. The antenna operates on VHF-UHF bands.
- The RD-9H and RD-88H are hand-held antennas with flexible whips. The half and quarter wave design allow these antennas to operate on long and short range communications.
- The RD-6H and RD-7H are stubby antennas with rubber whips. The RD-6H operates on UHF band. The RD-7H operates on VHF band. Special frequency ranges are available by custom order.
- The model S-1 is constructed with a spiral whip of 17-7PH stainless steel wire.
- The S-2 is designed for small portable transceiver. SMA male connector is built in.
- The B-1 is built a traditional quarter wave whip. A standard BNC male connector is included on the output port.



SPECIFICATIONS	AL-760	AL-800 AL-800W	S-1 S-2	RD-9H RD-88H	B-1 AL-750	RD-6H RD-7H
Frequency Range	143-148 MHz	143-148/430-460 MHz			140-512 MHz	140-174 MHz 400-512 MHz
Gain	3.2 dBi	3.2/5.6 dBi	Unity			
Max. Power Load	25 W cw ( 60 W max. )					
VSWR	Less than 1.5:1					
Output Connector	Standard BNC male ( S-2 build in SMA male connector. )					
Whip Style	Retractable			Flexible		
Weight	65 g	80 g	35/28 g	23/48 g	35/25 g	7/11 g
Dimensions	97 cm	88 cm	39/38 cm	17/40 cm	39/35 cm	23/32 cm

## WIRELESS LAN & MOBILE PHONE ANTENNA

● The RD-10/12 are 0/3 dBi gain flexible stubby antenna. They operate on 0.8-5.8GHz. The RD-11 is a 3 dBi gain retractable antenna and has 360 degree swivel design. The output connector is available on SMA, SMB or others.

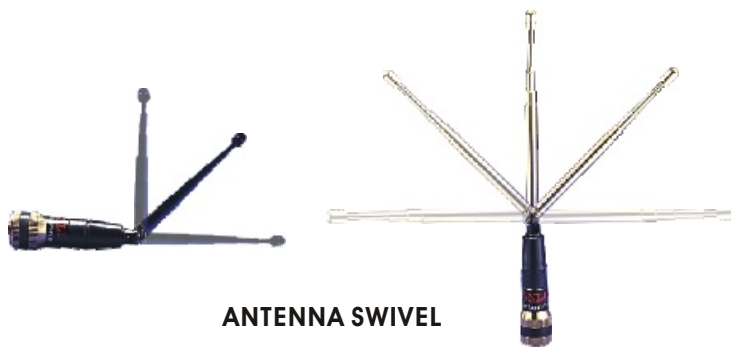
● The RD-19 is a compact and high performance stubby antenna that operates on **mobile phone** or computer **wireless LAN** systems. The optional connectors are built in by OEM requirement. The connectors are available with SMA, SMB or other specifications.



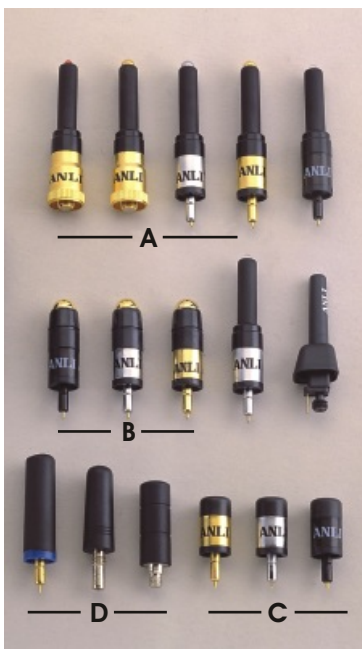
RD-10



RD-11



ANTENNA SWIVEL



RD-19

SPECIFICATIONS	RD-11	RD-10	RD-12	RD-19	RD-21
Frequency Range	800/900/1800/1900/2400/5800 MHz by custom order				
Gain	Unity/3/5 dBi				
Max. Power Load	25 W max.				
VSWR	Less than 1.5:1				
Output Connector	SMA , SMB or others by custom order				
Whip Style	Retractable	Flexible			
Weight	25 g	30 g	5 g	7 g	11 g
Dimensions	16 cm	15 cm	5 cm	2-5 cm	7-15 cm



RD-21

## Ni-Ti ALLOY RETRACTABLE ANTENNA

● The highly reliable RD-21 is constructed of a Ni-Ti alloy wire delivering optimum performance on mobile phone communications.

● The RD-21 is available for custom order only.



RD-12



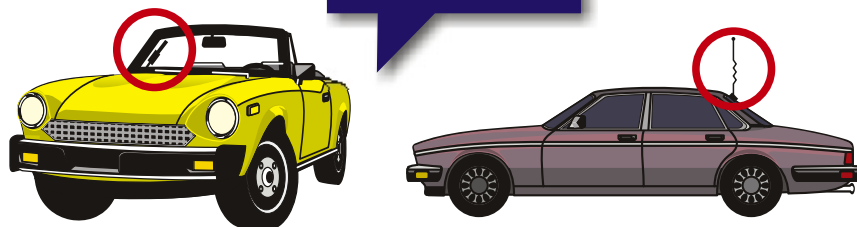
MSA-4

PAT. US 63197  
TW 49034

## INVISIBLE & REVOLUTIONARY! DIGITAL MICRO SCREEN MOBILE PHONE ANTENNA

- The MSA-4 is a new proprietary design that enhances performance with its unique MICRO SCREEN element. Cellular performance and hand off is improved when land or marine vehicles are travelling in relationship to the cell-site.
- Easy to install it inside of a car or boat with 3M VHB adhesive tape. No mounting holes required. No car or boat vandalism problem. 100 % weather proof. This antenna operates on **DIGITAL** and traditional mobile phone communication bands AMPS, GSM, PCN, PCS and other mobile phone systems.
- The enhanced performance is close to traditional outside vertical antennas and is extremely omni-directional.
- The MSA-4 can be mounted on non-metallic surfaces and glass, even out of sight on the car or boat body of fiberglass. It fits any land or marine vehicles.

### APPLICATION



## GLASS MOUNT ANTENNA

- The glass mount antenna features a patented design that allows the whip and coupling box to efficiently transfer mobile phone signal through the vehicle glass. Operates on AMPS, GSM, PCN, PCS and other mobile phone systems.
- The antenna whip is constructed of a 17-7PH stainless steel wire with 3M VHB adhesive tape for glass mount. 15ft RG-58AU is included.



PG-5/5E

PAT. TW 63197

PG-4R PG-4RE PG-4E PG-4

SPECIFICATIONS	PG-4 PG-4E	PG-4R PG-4RE	PG-5 PG-5E	MSA-4 MSA-4E
Frequency Range	800 MHz 900 MHz	800 MHz 900 MHz	800/1900 MHz 900/1800 MHz	800/1900 MHz 900/1800 MHz
Gain		3 dBi		3/5 dBi
Max. Power Load	25 W max.			
VSWR	Less than 1.5:1			
Output Connector	TNC or FME	-	TNC or FME	
Whip Style	open coil close coil	open coil close coil	open coil	MSA
Antenna Type	with cable	passive repeater	with cable	
Weight	245 g	80 g	235 g	150 g
Dimensions	33/37cm	33/37cm	13cm	61x1cm

## ELEVATED FEED, MAGNET, ROOF MOUNT MOBILE PHONE ANTENNA



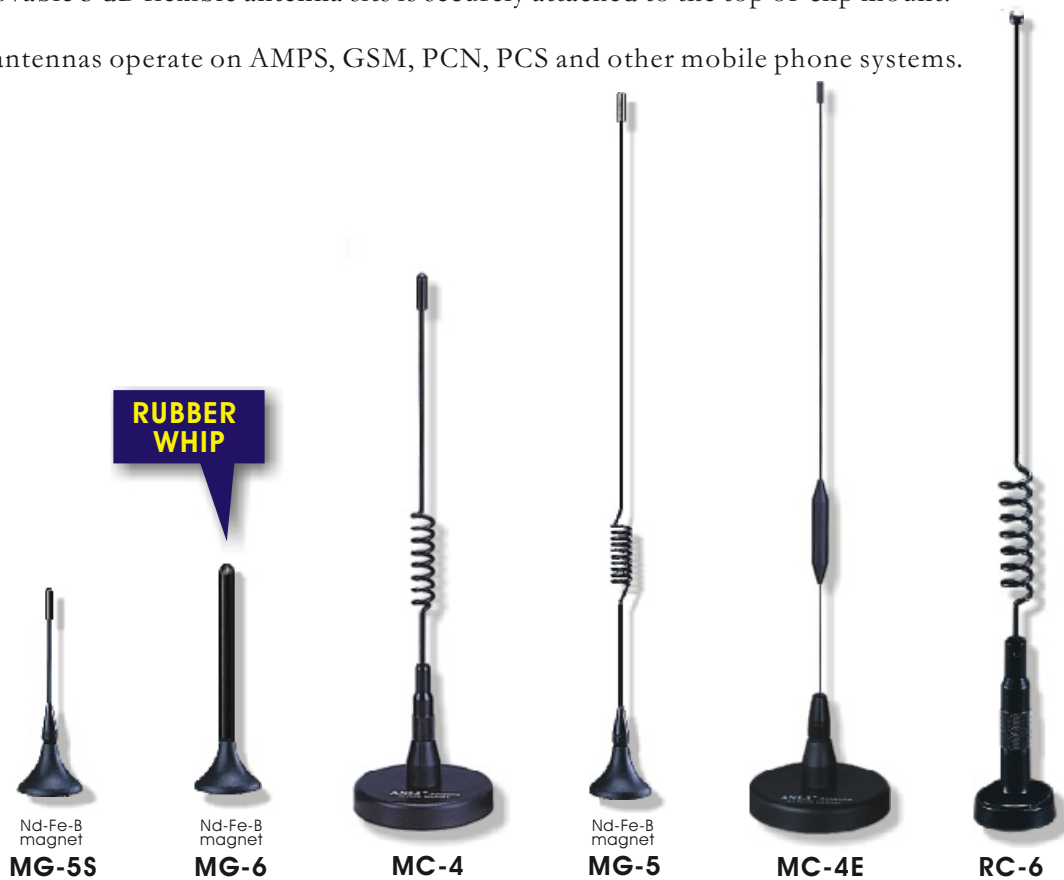
WA-2P

- The TA-5 is an elevated feed antenna for installation on rear trunk of vehicles. The antenna has an angle adjustable stainless steel mount and a fiberglass elevated mast. TA-5P is designed for installation on side body, post or mirror of vehicles
- The MG-5/5S/6 is built with a new generation rare earth permanent magnetic alloy magnet. High reliability for vehicle installations.
- The MC-4/4E are magnet mount antennas that are built with a HI-FLUX 2-3/4" Dia. Magnet. The RC-6 is designed for optimum performance on roof mount installations. 3 dBi omni-directional gain is obtained when roof mounted.
- The WA-2P is designed for window clip mount. No tuning and tool required on installation. Removable 3 dB flexible antenna sits is securely attached to the top of clip mount.
- The antennas operate on AMPS, GSM, PCN, PCS and other mobile phone systems.



TA-5P

TA-5



Nd-Fe-B magnet  
**MG-5S**

Nd-Fe-B magnet  
**MG-6**

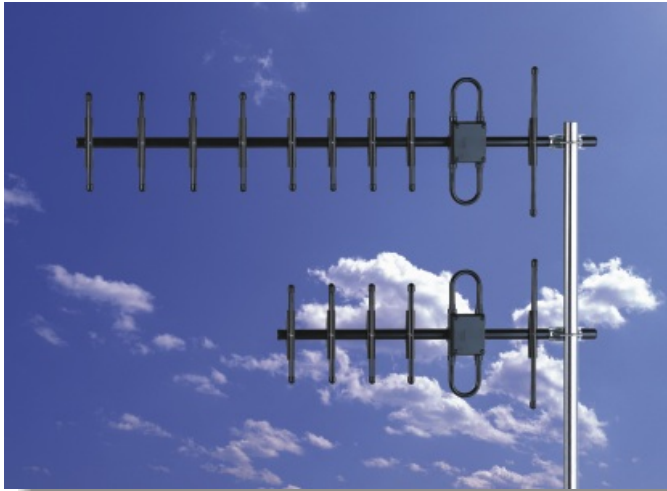
**MC-4**

Nd-Fe-B magnet  
**MG-5**

**MC-4E**

**RC-6**

SPECIFICATIONS	MG-5 MG-5S	MG-6	WA-2P	MC-4E MC-4	TA-5 TA-5P	RC-6
Frequency Range	800 , 900 , 800/1900 , 900/1800 MHz (by option)					
Gain	3 dBi 0 dBi	0 dBi	3 dBi	3 dBi	5 dBi	3 dBi
Max. Power Load	25 W max.					
VSWR	Less than 1.5:1					
Output Connector	TNC or FME with 9 ft RG-174AU cable			TNC or FME with 15 ft RG-58AU cable		
Whip Style	open coil single	flexible		close coil open coil	open coil	
Weight	65/58 g	65 g	75 g	465 g	550 g	280 g
Dimensions	27/6.5 cm	6.5 cm	20 cm	30cm	55 cm	28 cm



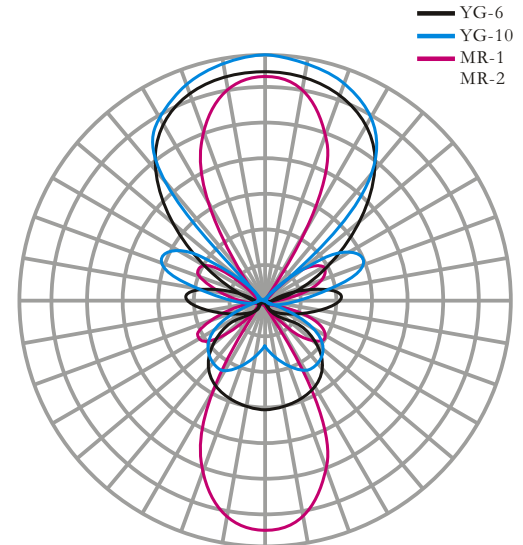
YG-10

YG-6

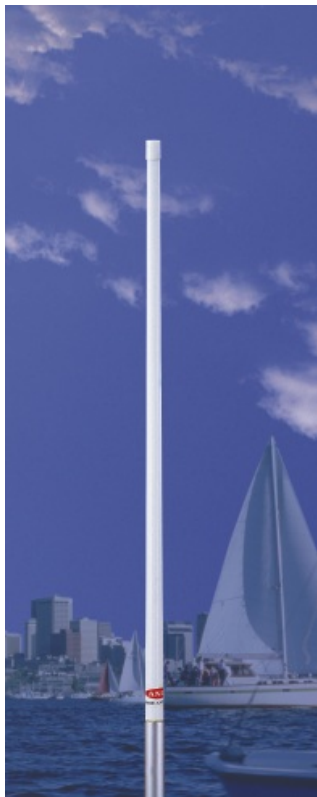
SPECIFICATIONS	MR-1	MR-2	YG-6	YG-10
Frequency Range	800 , 900 , 800/1900 , 900/1800 MHz ( by option)			
Gain	>9 dBi		>10 dBi	>13 dBi
Max. Power Load	200W cw (300W max.)			
VSWR	Less than 1.5:1			
Output Connector	Standard N female Connector			
Weight	0.98 KGS	1 KGS	0.9KGS	1.1 KGS
Dimensions	115 cm(45in)		17 x 60 cm	17 x 90 cm
Wind Load	125 Mph			

## DIRECTIONAL ANTENNA

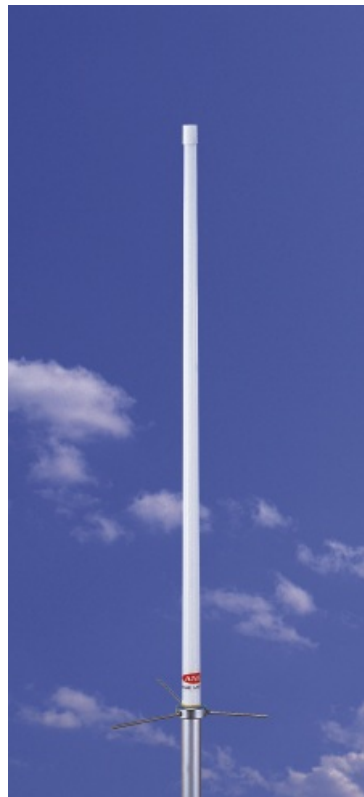
- The YG series are directional YAGI types. The elements are constructed of aluminum alloy tube and heavy duty element clips with high quality 'powder coating' to provide high stability and reliability for long range RF radio communications. Standard 50 ohms output with a **N female** connector.
- Heavy duty mounting kit is included for easy installation. The dipole feeding box is weather and water proof.



E-PLANE  
Radiation pattern chart



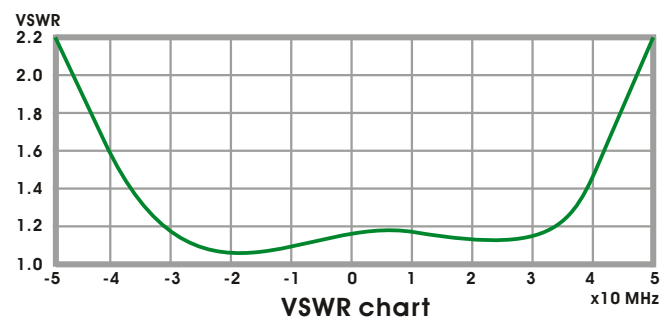
MR-1



MR-2

## FIBERGLASS ANTENNA

- The MR series were designed for mobile phone communications. MR-1 is a vertical type for marine applications. The MR-2 is a Ground-Plane type for base station. The outer shell is constructed by high density fiberglass tube to provide higher stability and reliability on the wireless communication.
- Highly conductive copper coils are combined to be collinear arrays to generate more antenna gain and best impedance matching at low VSWR.
- Standard 50 ohms output impedance with N female connector. Other connectors are available by custom order.





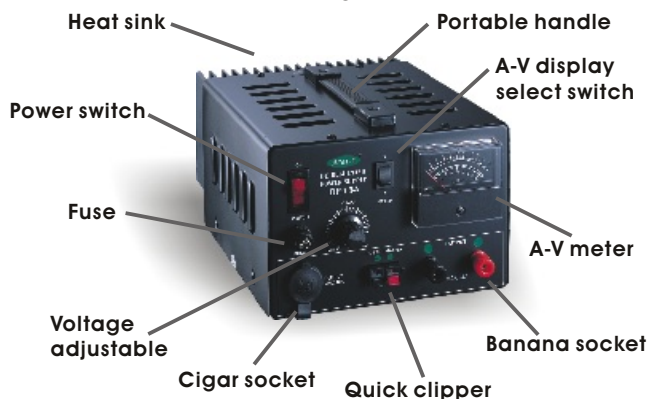

**DP-15AM**

**DP-15A**

**DP-10A**

## HIGH PERFORMANCE DC REGULATED POWER SUPPLY

- The DP series are constructed of a high reliable regulated IC on the solid state PC board to provide stable continuously voltage and current. They are suitable for all radio devices and electronics bench operation. Built in automatic overload and short circuit protection.
- Rugged encapsulated construction assure years of reliable operation. All features are designed to provide regulation and low ripple parameters.
- The front panel of the DP-15AM establish a voltage-current display by switch control. The output voltage can be adjusted from DC3V-14V.
- The excellent air-flow design provides low working temperature on high load operation. Heavy duty heat sink is built in.
- Output connectors constructed with three quick operation types.



SPECIFICATIONS	DP-10A	DP-15A	DP-15AM
Output Voltage	DC 13.8V	DC 13.8V	DC 3-14V
Output Current	DC 10 A ct (12A max.)	DC 15 A ct (20A max.)	DC 15A ct (20A max.)
Ripple & Noise	Less than 1mV rms		
Load Effect	Less than 1% at DC 12V		
Operation Temp.	0 - 40°C		
Input Power Source	AC 115V/60Hz or AC 230V/50Hz ( AC 115/230V dual voltage by custom order)		
Weight	6.3 KGS	6.8 KGS	7.0 KGS
Dimensions	13 cm x 19 cm x 24 cm		



# 19" RACK MOUNT BATTERY BACKUP POWER SUPPLY

- The BP series are constructed with a high reliable regulated IC on the solid state PC board with charge circuit to provide stable continuously voltage/current and DC power backup when AC power is shut down. Built in automatic overload and short circuit protection.
- 19" rugged encapsulated construction assure years of reliable operation. All features are designed for excellent regulation and low ripple/noise parameters.
- The excellent air-flow design provides low working temperature on high load operation. Heavy duty heat sinks are built in.

SPECIFICATIONS	BP-15AM BP-15A	BP-30AM BP-30A
Output Voltage	DC 13.8V	
Output Current	DC 15Act (Max. 20A)	DC 30Act (Max. 35A)
Ripple & Noise	Less than 1mV rms	
Load Effect	Less than 1% at DC 12V	
Operation Temp.	0-40°C	
Input Power Source	AC115V/60Hz or AC230V/50Hz	
A-V Meter	For BP-15AM/30AM only	
Backup Battery	Not included	
Weight	11KGS	16KGS
Dimensions	40.8 cm x 26 cm x 17.7 cm	



**BP-15AM/BP-30AM LIGHTNING ARRESTER**



**LT-1**

Gas discharge tube design. Available on N or UHF connector and 200W or 2KW.



**BP-15A/BP-30A HELICAL FILTER**



**NF-2V/NF-70U**

NF-2V for amateur radio 144-148MHz. NF-70U for 430-450 MHz.



**19" Open Rack**



**RM-19F**

**2 WAY COMBINER**



**MB-2**

Operates from 800MHz to 2000MHz. Max. power 15W. 50 ohms TNC female output. Insertion loss <0.5dB.

**BP-15A/BP-30A SYNC ANTENNA SWITCH**



**AS-21**

Frequency up to 1GHz operates on DC26V, option power source is available. A-B switch type.

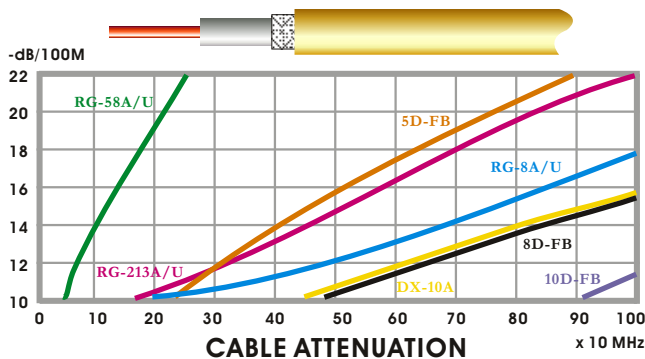
**4 WAY COMBINER**



**MB-4**

## HIGH QUALITY COAXIAL CABLE

Available on RG-58A/U, RG-8A/U, RG-213A/U, DX-10A 5D-FB, 8D-FB, 10D-FB.



## RF CONNECTORS & ADAPTORS

CN-1	CN-2	CN-3	CN-4	CN-5	CN-6
PL-259	PL-259	FME	N	N to BNC	SO239 double
CN-7	CN-8	CN-9	CN-10	CN-11	CN-12
N to SO239	SO239 to BNC	SO239 right angle	BNC	TNC	Mini-UHF



MC-1NMO

MC-1UHF



TA-4

TA-1



TM-6G

TM-6



P-1

P-2



RG-188A/U  
Teflon+5DFB

RG-188A/U  
Teflon+5DFB

RG-58A/U

CL-1

CL-3

CL-2



TA-1NMO



TA-1UHF



TA-4NMO



JB-100UHF



JB-100NMO

SPECIFICATIONS	MC-1 UHF	TA-1 UHF	JB-100 UHF	MC-1 NMO	TA-1 NMO	JB-100 NMO	TA-4 NMO	CL-3	CL-1 CL-2	P-1	P-2	TA-1	TA-4	TM-6	TM-6G /6GL
Antenna Connector	UHF female(SO239)			Standard NMO				UHF or NMO	UHF female (SO-239)			None			
Output Connector	UHF male(PL-259)								None						
Cable Length	15ft RG-58C/U meet MIL-STD-17C								16 ft		None				
Mount Style	Magnet	Trunk	Magnet	Magnet	Trunk	Magnet	Trunk	Hole		Mirror Post	Wall	Trunk		Gutter	
Impedance	50 ohms														
Weight	420g	310g	850g	510g	510g	860g	490g	270g	530g	192g	82g	115g	85g	170g	175g